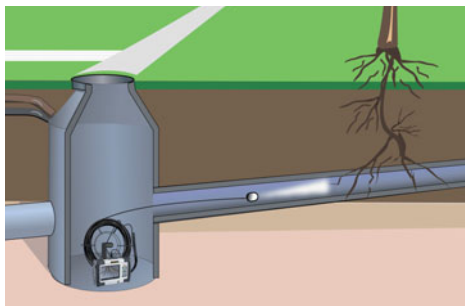


## VideoControl-Master



Modular, versatile master unit for professional and efficient fault finding in manufacturing and the construction industry.

Rev.0812



5.0" TFT colour display

Connection for various camera units

- **Large, high resolution 5.0" colour display** powerfully backlit for detailed image analysis on site, also outdoors.
- **Integrated still image and video recording function** with snapshot option for image documentation during video recording.
- Adjustable, **digital zoom function** with large and high resolution zoom range.
- **Rotation:** The manual image rotation function enables the image to be rotated by 90° in steps on the monitor.
- **Image comparison function:** Compares the current image with a reference image
- **Data storage** on SD card with up to 16 GB data volume
- Built-in **PC interface** via USB 2.0 for smooth data exchange
- External monitors can be connected via the **TV-Out port**
- **Multilingual On-Screen-Display**
- **Camera unit can be replaced** to suit application
- **Rechargeable Li-Ion battery** with integrated charging electronics for up to 4h continuous operation
- **Wireless ready:** Prepared for wireless adapter. **Cordless image transfer via wireless interface** extends the field of applications.
- **Rugged, shock-resistant and waterproof design** for use in many critical environments
- With **varied mounting options** for utility belt, 1/4" tripod, base and screw connection

### TECHNICAL DATA

<b>SCREEN TYPE</b> 5.0" TFT colour display
<b>CONNECTIONS</b> Industrial connector for camera TV-Out port, PAL or NTSC USB adapter, Type Mini-B SD card slot DC adapter for 5V DC power pack
<b>WIRELESS RECEIVER</b> Typical range 10 m, max. 30 m ISM 2.4 GHz video transmission Audio/Video (Stereo/PAL or NTSC) receive 87 dB, SNR 42 dB, Fmod 15 kHz
<b>DISPLAY RESOLUTION</b> 640 x 480 pixels
<b>FORMAT PICTURE / IMAGE RESOLUTION</b> JPEG format, 640 x 480 pixels
<b>VIDEO FORMAT / IMAGE REFRESH RATE</b> ASF / 30 frames / sec
<b>LED</b> 10 luminosity degrees
<b>ZOOM</b> 2 x digital zoom in 10% steps
<b>EXTERNAL MEMORY</b> 2 GB SD card (supports up to max. 16 GB)
<b>INTERFACE</b> USB 2.0
<b>AUTO SHUT OFF</b> 5 min / 10 min / 15 min / 30 min (adjustable)
<b>POWER SUPPLY</b> Li-Ion rechargeable battery / power pack
<b>OPERATING TIME</b> 4h
<b>OPERATING TEMPERATURE</b> -10 ... 60°C
<b>STORAGE TEMPERATURE</b> -20 ... 70°C
<b>PROTECTION CLASS</b> IP65
<b>HUMIDITY</b> max. 90 % relative humidity (no condensation)
<b>WEIGHT</b> (inkl. Li-Ionen Akku) 0,86 kg
<b>DIMENSIONS</b> (W x H x D) 200 mm x 130 mm x 60 mm



### VideoControl-Master

- + USB-cabel
- + 2 GB SD-card
- + power supply/battery charger
- + AV-cabel
- + carrying strap

**Packing dimension** (W x H x D)  
300 x 215 x 190 mm

ARTICLE	ARTICLE NO.	EAN CODE	PU
VideoControl-Master	084.100A	4 021563 685028	1

<b>DISPLAY</b>	640 x 480 pixel	5" TFT	360°	ZOOM 2x	REC	SD	USB	IP 65	1/4"	RECHARGE 3,5h
----------------	-----------------	--------	------	---------	-----	----	-----	-------	------	---------------